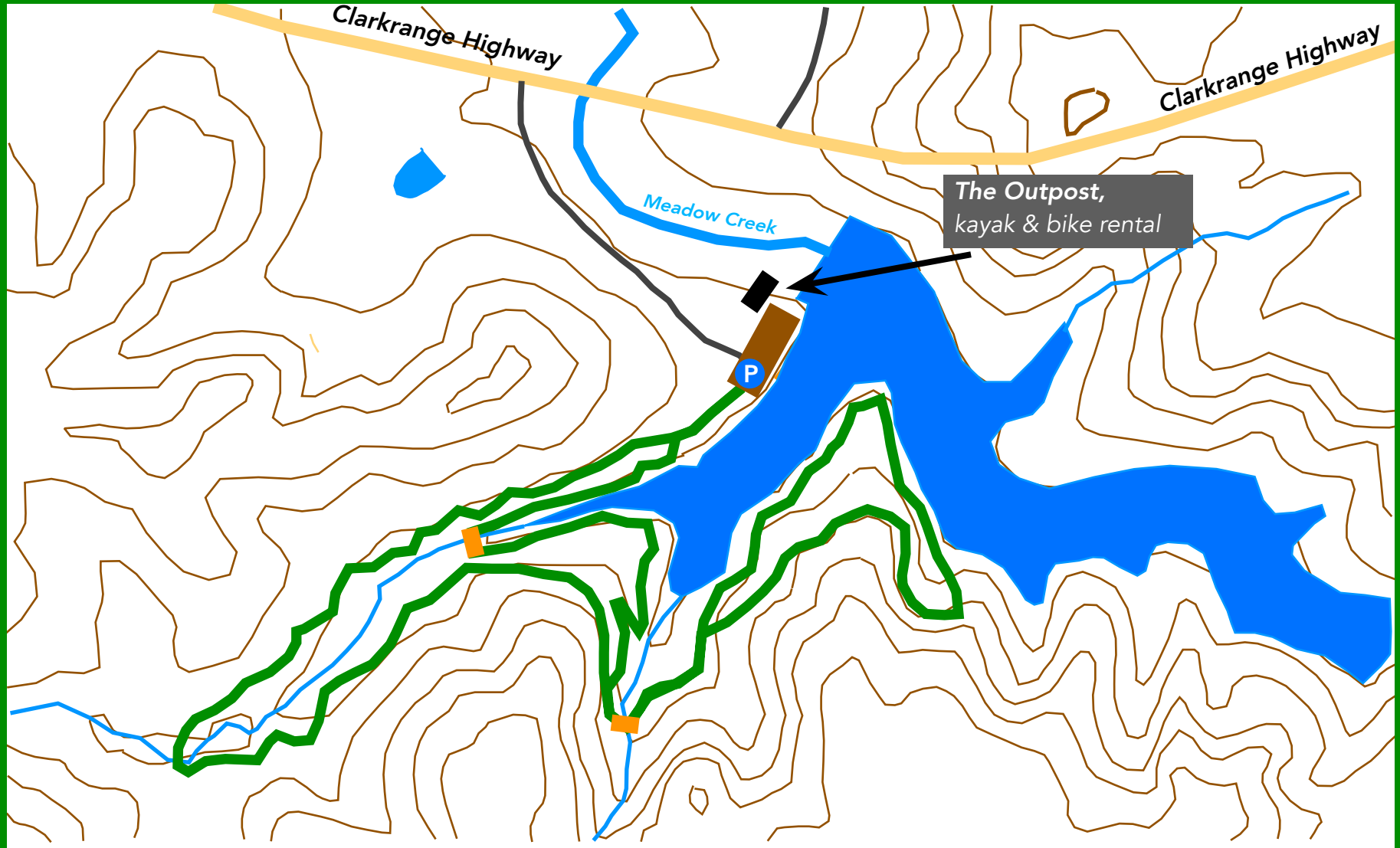


Gateway Trail, Meadow Creek Park, Monterey (3.0 miles)



Note: This trail is reasonably easy but there is short section about halfway around that is rather steep.

The trails depicted in this map are concepts developed by the Friends of the Trails. They have no official standing.

Friends of the Trails

501(c)(3) non-profit organization

For more trail maps go to www.crossvilletrails.com

07/13/2023